



Roslin Business Community

Roslin is a beautifully restored terrace in West Melbourne and is the home of Ergo Consulting. The Directors of Ergo have made Roslin available as a city office base for business professionals. The location, in Rosslyn St, is an easy 5 minutes walk to the Errol St. shopping strip with a smorgasbord of cafes, and 5 minutes walk from Flagstaff Station.



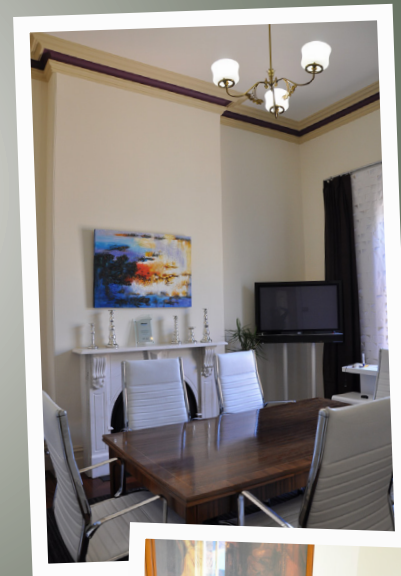
- As well as a 'city home', the Roslin Business Community offers networking and peer support.
- Membership includes use of the spaces, internet access, fax and photocopying, ad hoc landline use, and tea, coffee and snacks.
- The Roslin Business Community will have a cap of 10 members.
- Membership of the Roslin Business Community is available for the following terms (ex. GST):

12 months	\$3,300
3 months	\$975



All spaces at Roslin are 'hot'

that is there are no permanently allocated desks or rooms. The Roslin Business Community will have access to four spaces...



The Roslin Room

The Board Room style meeting room has electronic whiteboard, a large flat screen TV for data projection and can comfortably seat 6 people.

The Library

At the rear of the building, a small quiet space, ideal for when people need to 'shut the door' for intensive work. The lounge seating also offers a casual meeting space for 3 or 4 people.

The Business Community Room

The largest space is the default hot desk area with natural light and desk space to accommodate 6 or 7 people comfortably.

The Kitchen

This bright communal area is the hospitality hub with commercial coffee machine and sit down eating or meeting for 10-12 people.

Please contact either Col Duthie or Derek Winter to express interest. A copy of the Roslin Business Community MOU is available on request.

e: transform@ergoconsulting.com.au

t: (03) 9923 7300

a: 49 - 51 Rosslyn St, West Melbourne VIC 3003